



# **Education in The City of London Annual Report 2015**

## Table of Contents

1. Introduction .....	3
2. Summary of key findings.....	3
3. Demographics.....	4
3.1 Population .....	4
3.2 Schools .....	4
4. Quality of provision - Ofsted Inspections.....	5
5. Attainment outcomes .....	6
5.1 Health warning about small numbers.....	6
5.2 Early Years Foundation Stage.....	6
5.3 Phonics in Year 1 .....	7
5.4 Key Stage 1 .....	8
5.5 Key Stage 2 .....	10
6. Attendance.....	17
7. Admissions .....	18
7.1 Primary school admissions.....	18
7.2 Secondary school admissions.....	18

**Report Produced by:**  
Data & Performance Team  
Strategy & Commissioning  
Children's Services  
London Borough of Islington

## 1. Introduction

This annual report looks at how well the education service in the City of London is performing and meeting our aspirations for children and young people's educational outcomes. The report is one of the ways in which we keep members, governors and our wider partners informed about education performance in the City of London.

The data in this report are drawn from a range of sources. Where available, comparisons have been made between performance of City of London resident children in Islington, Sir John Cass's School and the inner London and national performance. The analyses cover the most recent full academic year – 2014/15 – and include some trends from 2010/11, where the data are available.

## 2. Summary of key findings

### Quality of provision

- Our one maintained primary school has been judged outstanding for overall effectiveness in its last two Ofsted inspections (2013 and 2008).

### Outcomes for children and young people

- **Early Years Foundation Stage** early education has never been stronger, with Sir John Cass children performing well above the national benchmark in 2014/15.
- **In the phonics screening check** outcomes for Year 1 children improved in 2014/15 and this compares favourably with Inner London and England.
- **Key Stage 1** outcomes improved slightly in reading and writing following a dip the previous year. Although improved - performance in reading at Sir John Cass was below all City residents including those attending Prior Weston School in Islington. Mathematics performance was stable.
- **Key Stage 2** outcomes in reading, writing and mathematics combined were at 97% for Level 4 and above – an improvement compared with 2013/14, owing to better performance in mathematics.
- **Key Stage 2** outcomes at **Level 5** and above improved in all three subjects and compares favourably to Inner London and national.

### Attendance and behaviour

- **Absence rates** improved slightly between 2012/13 and 2013/14, and continue to be better than the inner London and England benchmarks.
- **Persistent absence** has been at zero for two consecutive years.
- Ofsted inspection judgements on behaviour show that Sir John Cass's school is outstanding.

### 3. Demographics

#### 3.1 Population

Over the ten years since Census 2001, London's population has grown by 900,000 (11.6%). The population continues to grow and is set to increase further; by 2020, the population is forecast to exceed nine million residents. Within the City of London, the population is projected to grow from 7,400 in 2011 to 9,450<sup>1</sup> in 2021 (27%).

The population data from the 2011 census provides projections (mid-year estimates for 2013) which suggests that in 2013 there are 269 primary age (4 - 10) and 147 secondary age (11 - 16) children living in the City of London out of an estimated 843 total of 0 - 19 year olds<sup>2</sup>. Of the 843 young people aged 0 - 19 years, 361 (43%) are from Black and minority ethnic (BME) backgrounds.

City of London is the 31<sup>st</sup> most deprived local authority in London out of 33 according to the 2015 Indices of Multiple Deprivation (up from 32<sup>nd</sup> IMD 2010).

#### 3.2 Schools

The City of London has one maintained primary school, three sponsored secondary academies and two primary academies in neighbouring boroughs. It also supports three independent schools based in the City.

The one maintained primary school is Sir John Cass's Foundation Primary School with Cass Child & Family Centre. Primary aged children attend Sir John Cass and a small number of schools in Islington, Tower Hamlets and Camden. Secondary age children attend a range of schools which includes Islington secondaries and schools in a number of other local authorities, including neighbouring Tower Hamlets and Hackney.

Table 1 shows the proportion of children who are eligible for Free School Meals (FSM) at Sir John Cass primary school from 2011/12 to 2014/15. During this period, the proportion of pupils known to be eligible for FSM has remained around a fifth of the cohort.

**Table 1: Proportion of Children Eligible for Free School Meals (FSM) at Sir John Cass from 2011/12 to 2014/15**

Free School Meal Status	2011/12		2012/13		2013/14		2014/15	
	Number	%	Number	%	Number	%	Number	%
FSM	41	18%	52	22%	42	18%	50	21%
Non-FSM	191	82%	181	78%	191	82%	190	79%
<b>Total</b>	<b>232</b>	<b>100%</b>	<b>233</b>	<b>100%</b>	<b>233</b>	<b>100%</b>	<b>240</b>	<b>100%</b>

Source: January School Census 2012 to 2015

<sup>1</sup> The source data is from the Greater London Authority (GLA) 2014 Round of Demographic Projections - SHLAA, short term migration, capped household size model.

<sup>2</sup> The source data is from the Greater London Authority (GLA) 2012 Round of Demographic Projections - SHLAA based borough projections and the mid-year estimates are for 2013.

Table 2 shows the proportion of children with special educational needs (SEN) at Sir John Cass primary school. The proportion of children at School Action and School Action Plus combined has risen again to 24% in 2014/15 up from 15% in 2013/14. The proportion of pupils with a Statement or Education and Health Care Plan has remained at 3% with the addition of one pupil this year.

**Table 2: Proportion of Children with Special Educational Needs (SEN) at Sir John Cass from 2011/12 to 2014/15**

Special Educational Needs Category	2011/12		2012/13		2013/14		2014/15	
	Number	%	Number	%	Number	%	Number	%
No SEN	173	75%	188	81%	190	82%	174	73%
School Action	32	14%	23	10%	22	9%	37	15%
SEN Support* / School Action Plus	23	10%	19	8%	15	6%	22	9%
Statement of SEN / EHCP	4	2%	3	1%	6	3%	7	3%
<b>Total</b>	<b>232</b>	<b>100%</b>	<b>233</b>	<b>100%</b>	<b>233</b>	<b>100%</b>	<b>240</b>	<b>100%</b>

Source: January School Census 2012 to 2015

\* Please note: under the new code of practice, SEN Support will replace school action and action plus

#### 4. Quality of provision - Ofsted Inspections

Sir John Cass's Foundation Primary School was last inspected by Ofsted in April 2013, when it was judged to be outstanding, for overall effectiveness and in all four areas where judgements are made. This sustains the judgement made in its previous inspection, when it was also judged to be outstanding for overall effectiveness. The Ofsted judgements from the last two inspections are shown in Table 3.

**Table 3: The last two Ofsted Inspection Judgements for Sir John Cass's Foundation Primary School**

Judgement	Latest inspection 19/04/13	Previous inspection 26/09/08 <sup>3</sup>
Overall effectiveness	Outstanding	Outstanding
Achievement of pupils	Outstanding	NA
Quality of teaching	Outstanding	Good
Behaviour and safety of pupils	Outstanding	NA
Leadership and management	Outstanding	NA

Source: Ofsted Inspection Reports

There is one Islington primary school which has a significant number of City of London resident children on roll and that is Prior Weston. For the purposes of comparison the Ofsted judgements from Prior Weston's last two inspections are shown in Table 4.

<sup>3</sup> The inspection of Sir John Cass primary school in 2008 was a reduced tariff inspection and judgements were not made against all of the inspection criteria.

**Table 4: The last two Ofsted Inspection Judgements for Prior Weston Primary School**

Judgement	Latest inspection 15/10/13	Previous inspection 25/01/12
Overall effectiveness	Good	Satisfactory
Achievement of pupils	Good	Satisfactory
Quality of teaching	Good	Satisfactory
Behaviour and safety of pupils	Good	Good
Leadership and management	Good	Good

Source: Ofsted Inspection Reports

## 5. Attainment outcomes

This section analyses the educational performance in the City of London, comparing the outcomes at Sir John Cass primary school with City of London resident children attending Prior Western School in Islington and all City of London resident children, alongside the inner London and England averages for benchmarking purposes. The 2012/13 performance outturns are provisional at the time of writing this report and no benchmarking data is available for 2012/13.

### 5.1 Health warning about small numbers

Please be aware that the numbers of children in some of the analyses are often very small, particularly when the outturns are split into sub-groups of individual year groups. In a small cohort a slight change in numbers can make a large change in a percentage. One should exercise caution when making comparisons of outturns based on small numbers of children.

### 5.2 Early Years Foundation Stage

At the end of Reception children are assessed using the Early Years Foundation Stage Profile. This provides data on children across a range of domains, including communication, language and listening; as well as reading; number; and personal and social development. A percentage is derived for each cohort showing the proportion of children who have reached a 'Good Level of Development' (GLD).

**Table 5: Percentage of pupils who have reached a Good Level of Development between 2012/13 and 2014/15**

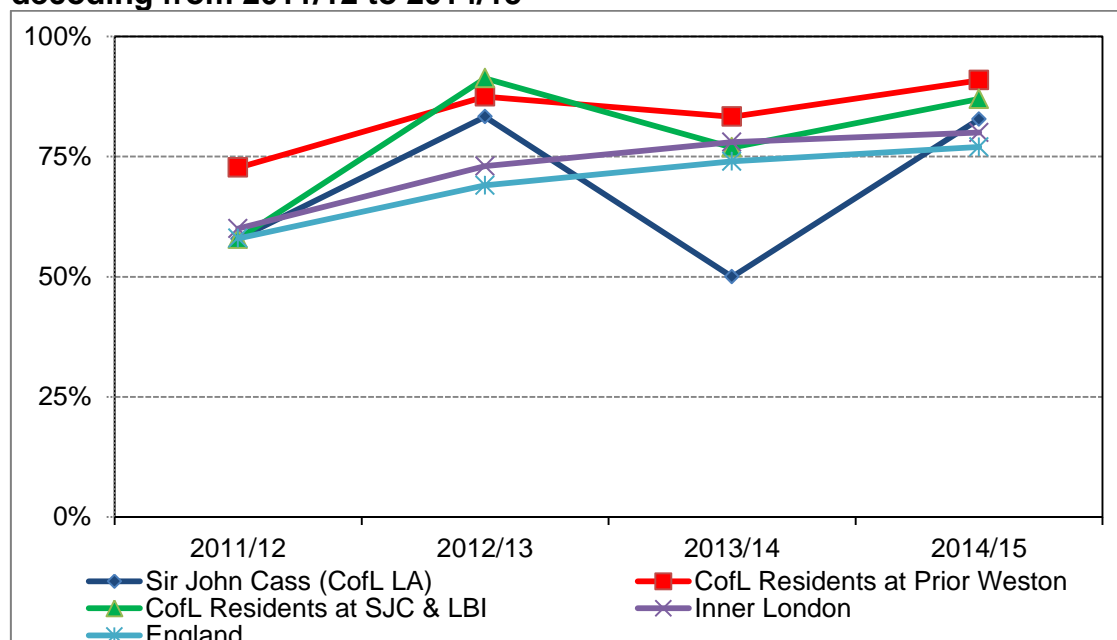
EYFS: Good Level of Development	2012/13		2013/14		2014/15	
	No.s	%	No.s	%	No.s	%
Sir John Cass	18	64.0%	21	70.0%	23	76.7%
CofL Residents	n/a	n/a	18	69.2%	23	82.1%
Cof L Residents at Prior Weston	14	50.0%	11	81.8%	10	100.0%
Inner London	n/a	53.0%	n/a	62%	n/a	67.7%
England	n/a	52.0%	n/a	60%	n/a	66.3%

Source: Sir John Cass's School and Islington's Children's Services and DfE Statistical First Releases

### 5.3 Phonics in Year 1

Since summer 2012 schools have been required to administer a statutory phonics screening check<sup>4</sup> of Year 1 pupils. Each pupil is required to read 40 words out loud to their teacher. Chart 1 shows the percentage of pupils who reached the required standard. Performance in the City of London has, on average been about 68.5% across the four years from 2011/12 to 2014/15.

**Chart 1: Percentage of pupils meeting the required standard of phonic decoding from 2011/12 to 2014/15**



Source: DfE Statistical First Releases and City of London

Note: The phonics' outturns are based on children in Year 1 only

Table 6 shows the figures for City of London residents attending Sir John Cass and Islington schools as well as those for City of London residents attending Prior Weston School alongside the data for Sir John Cass. The four year average for City of London residents attending Sir John Cass and LBI schools passing phonics was 78.3%; the figure for City of London residents attending Prior Weston was 83.6%.

**Table 6: The Proportion of pupils passing the Phonics Screening 2011/12 to 2014/15**

% passed (32+ marks or 80%+)	% Year 1 Passed			
	2011/12	2012/13	2013/14	2014/15
<b>Sir John Cass (CofL LA)</b>	57.9%	83.3%	50.0%	82.8%
<b>CofL Residents at Prior Weston</b>	72.7%	87.5%	83.3%	90.9%
<b>CofL Residents at SJC &amp; LBI</b>	57.9%	91.3%	76.9%	87.0%
<b>Inner London</b>	60.0%	73.0%	78.0%	80.0%
<b>England</b>	58.0%	69.0%	74.0%	77.0%

Source: DfE Statistical First Releases and City of London

<sup>4</sup> The range of phonic marks that can be achieved is between 0 and 40 and if a pupil's mark is at or above the threshold mark they are considered to have reached the required standard.

## 5.4 Key Stage 1

All Year 2 pupils (7 year olds) are assessed at the end of Key Stage 1. Teacher assessments are moderated to ensure consistency and accuracy. Table 7 shows the number of children in each of the groupings for Key Stage 1 outturns. The largest group is all children on roll at Sir John Cass's School.

**Table 7: Numbers of children in each group in the Key Stage 1 cohort from 2010/11 to 2014/15**

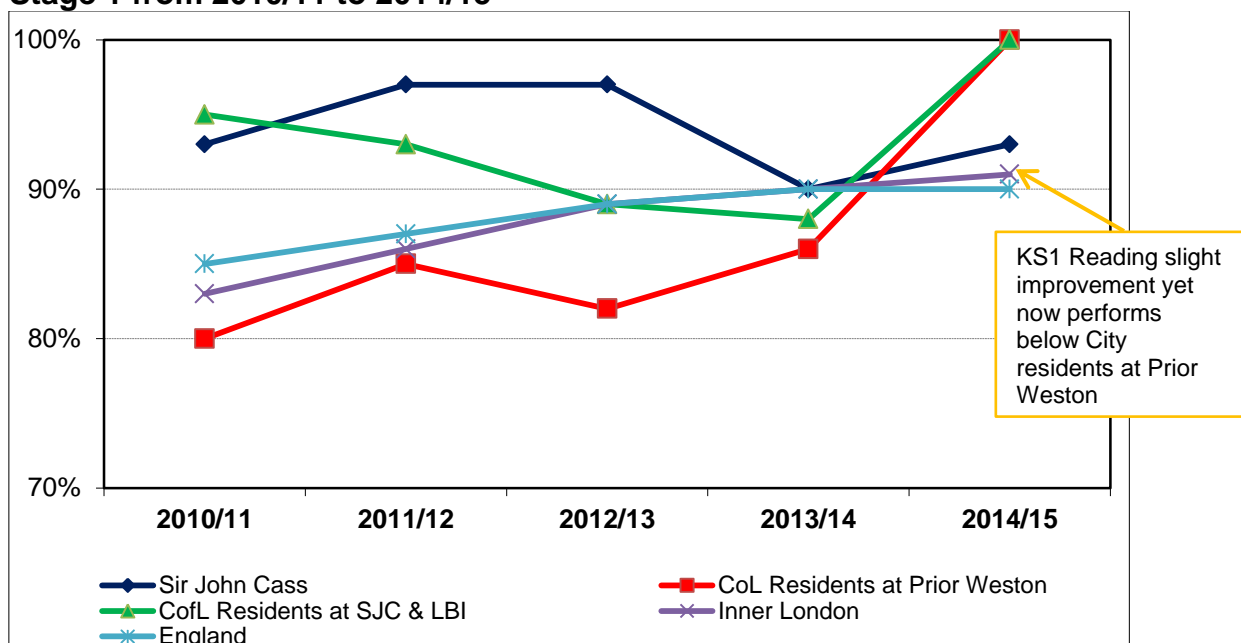
Key Stage 1	2010/11	2011/12	2012/13	2013/14	2014/15
<b>Sir John Cass Cohort</b>	29	30	30	30	30
<b>City of London Residents at SJC</b>	11	12	7	8	10
<b>City of London at Prior Weston</b>	5	13	11	7	14
<b>City of London other Islington school</b>	3	2	0	2	3
<b>CofL Residents at SJC &amp; LBI</b>	<b>19</b>	<b>27</b>	<b>18</b>	<b>17</b>	<b>27</b>

Source: Sir John Cass's School and Islington's Children's Services

Note: The numbers in each of these groupings are not necessarily mutually exclusive

Charts 2 to 4 plot performance in reading, writing and mathematics at Key Stage 1 from 2010/11 to 2014/15. Performance at Sir John Cass's School at Key Stage 1 dipped slightly in 2013/14 in reading and mathematics. Performance in reading and writing has improved in 2014/15, while mathematics has remained consistent with the previous year. Performance in all three subjects is above the inner London and national average in 2014/15.

**Chart 2: Percentage of pupils attaining Level 2 and above in Reading at Key Stage 1 from 2010/11 to 2014/15**



Source: DfE Statistical First Releases and City of London

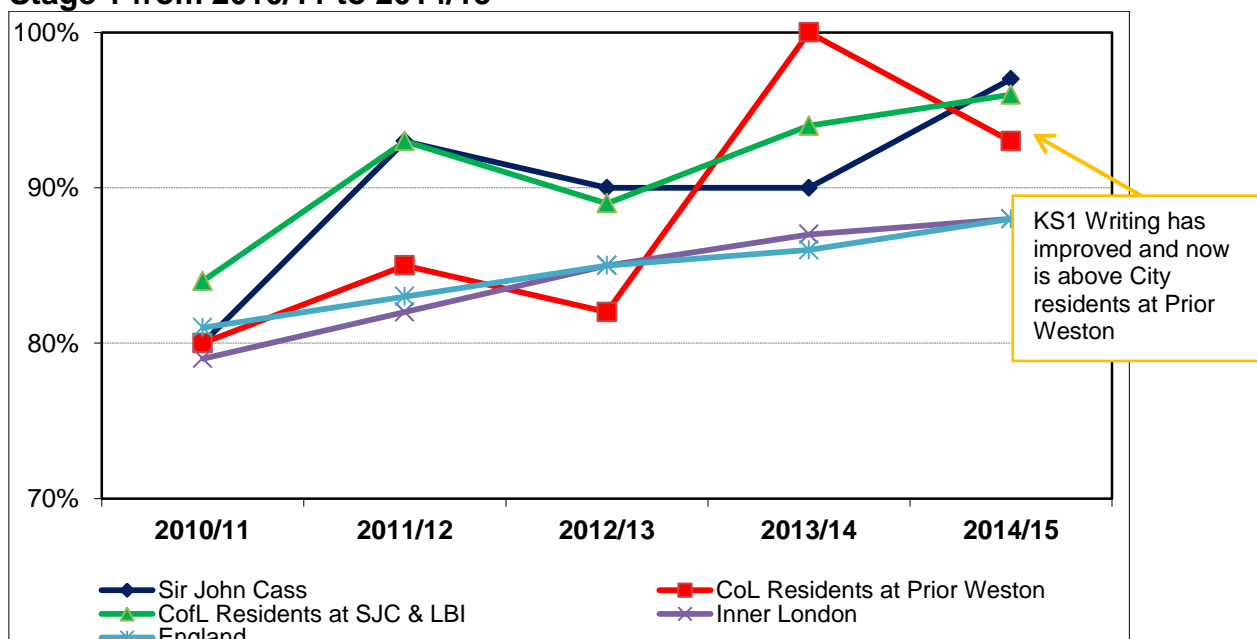
Note: The City of London data 2009/10 was suppressed by the DfE

Chart 2 shows that performance in Key Stage 1 reading at Sir John Cass's School in 2014/15 was below that of all City of London resident children and below City of London resident children attending Prior Weston School in Islington, despite the slight improvement this year. This was due to improvement made by City pupils attending other schools.



Chart 3 shows that performance in Key Stage 1 writing at Sir John Cass's School has risen to above that of all City of London resident children<sup>5</sup> and of City of London resident children attending Prior Weston School in Islington.

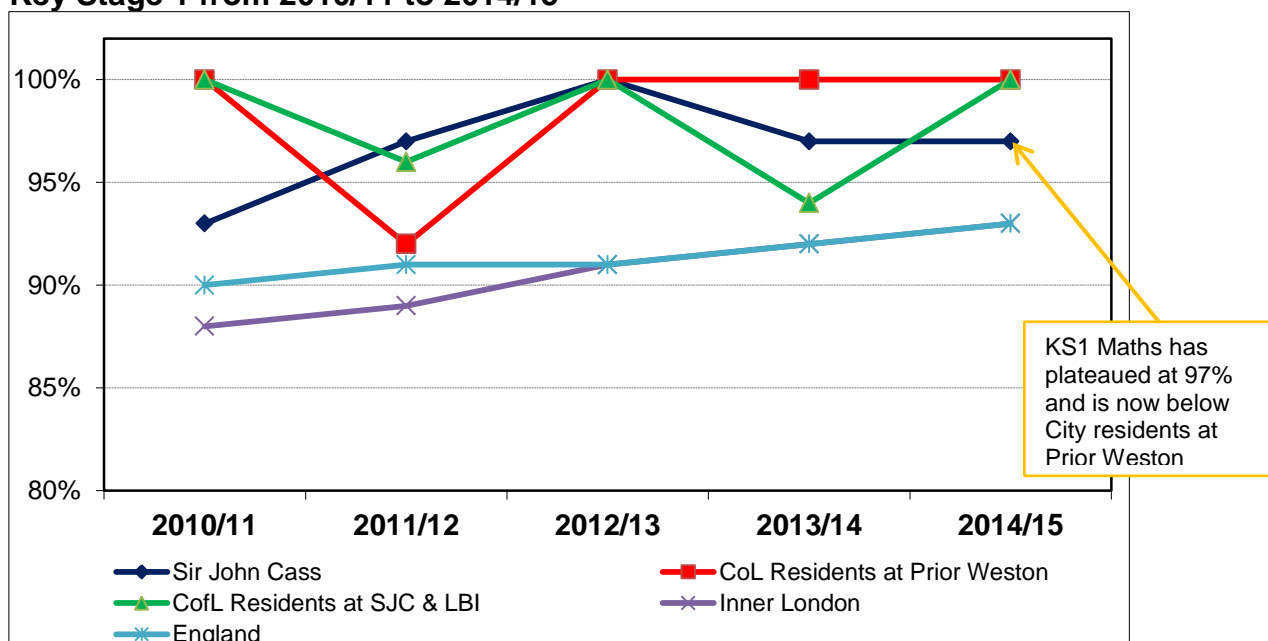
**Chart 3: Percentage of pupils attaining Level 2 and above in Writing at Key Stage 1 from 2010/11 to 2014/15**



Source: DfE Statistical First Releases and City of London

Chart 4 shows that performance in Key Stage 1 mathematics at Sir John Cass's School in 2014/15 and 2013/14 was at 97% Level 2 and above and that this is below that of all City of London resident children, and City of London resident children attending Prior Weston School in Islington.

**Chart 4: Percentage of pupils attaining Level 2 and above in Mathematics at Key Stage 1 from 2010/11 to 2014/15**



Source: DfE Statistical First Releases and City of London

<sup>5</sup> City of London resident children includes all City of London resident children on the roll of Sir John Cass, Prior Weston and other Islington primary schools.

## 5.5 Key Stage 2

All Year 6 pupils (11 year olds) are assessed at the end of Key Stage 2. Table 8 shows the numbers of children in each of the groupings for the Key Stage 2 outturns from 2010/11 to 2013/14. The largest group is the children on roll at Sir John Cass's School.

**Table 8: Numbers of children in each group in the Key Stage 2 cohort from 2010/11 to 2014/15**

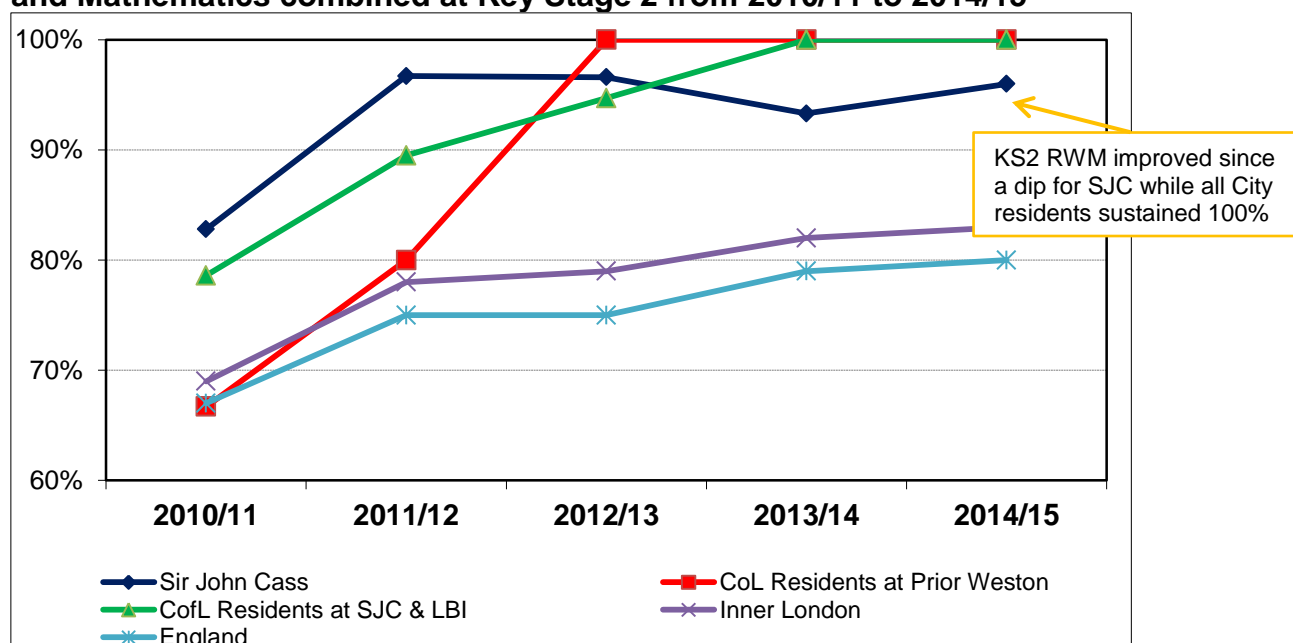
KS 2	2010/11	2011/12	2012/13	2013/14	2014/15
<b>Sir John Cass Cohort</b>	29	30	29	30	28
<b>City of London Residents at SJC</b>	10	7	11	4	5
<b>City of London at Prior Weston</b>	3	10	7	8	9
<b>City of London other Islington school</b>	1	2	1	1	1
<b>City of London Residents Total</b>	<b>14</b>	<b>19</b>	<b>19</b>	<b>13</b>	<b>15</b>

Source: Sir John Cass's School and Islington's Children's Services

Note: The numbers in each of these groupings are not necessarily mutually exclusive

Chart 5 shows that Sir John Cass's School has achieved 96% Level 4 and above in reading, writing and mathematics combined, an improvement on the previous year, and well above the inner London and England averages for 2014/15.

**Chart 5: Percentage of pupils attaining Level 4 and above in Reading, Writing and Mathematics combined at Key Stage 2 from 2010/11 to 2014/15**

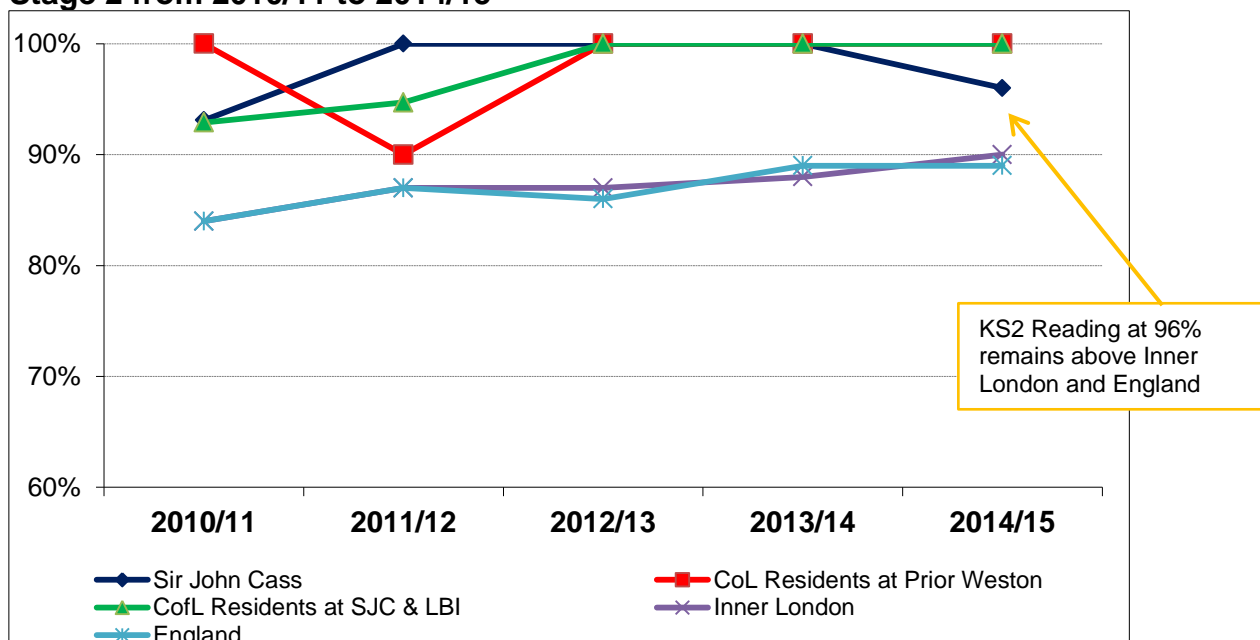


Source: DfE Statistical First Releases and City of London

Performance at Sir John Cass's School in 2014/15 was just below that of all City of London resident children and of City of London resident children attending Prior Weston School in Islington.

Chart 6 shows that Sir John Cass's School has achieved 96% Level 4 and above in reading, slightly below the previous year, above 2010/11 and well above the inner London and England averages. Performance on this measure at Sir John Cass's School in 2014/15 was slightly below that of all City of London resident children and of City of London resident children attending Prior Weston School in Islington.

**Chart 6: Percentage of pupils attaining Level 4 and above in Reading at Key Stage 2 from 2010/11 to 2014/15**



Source: DfE Statistical First Releases and City of London

**Chart 7: Percentage of pupils attaining Level 4 and above in Writing at Key Stage 2 from 2010/11 to 2014/15**

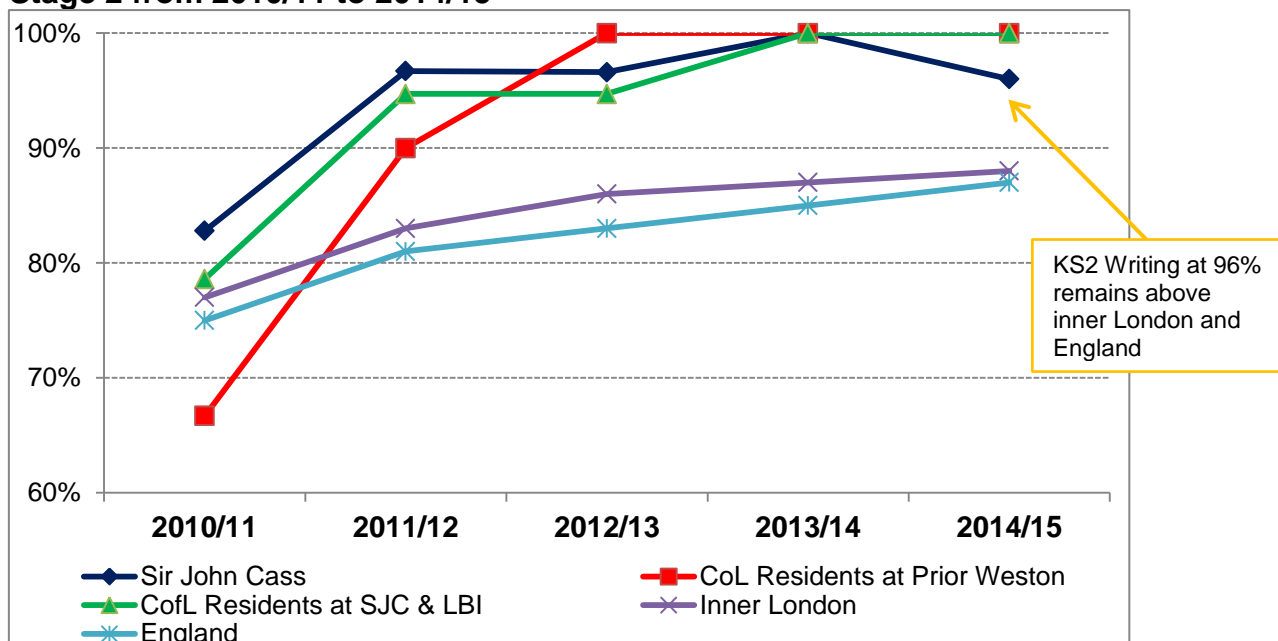
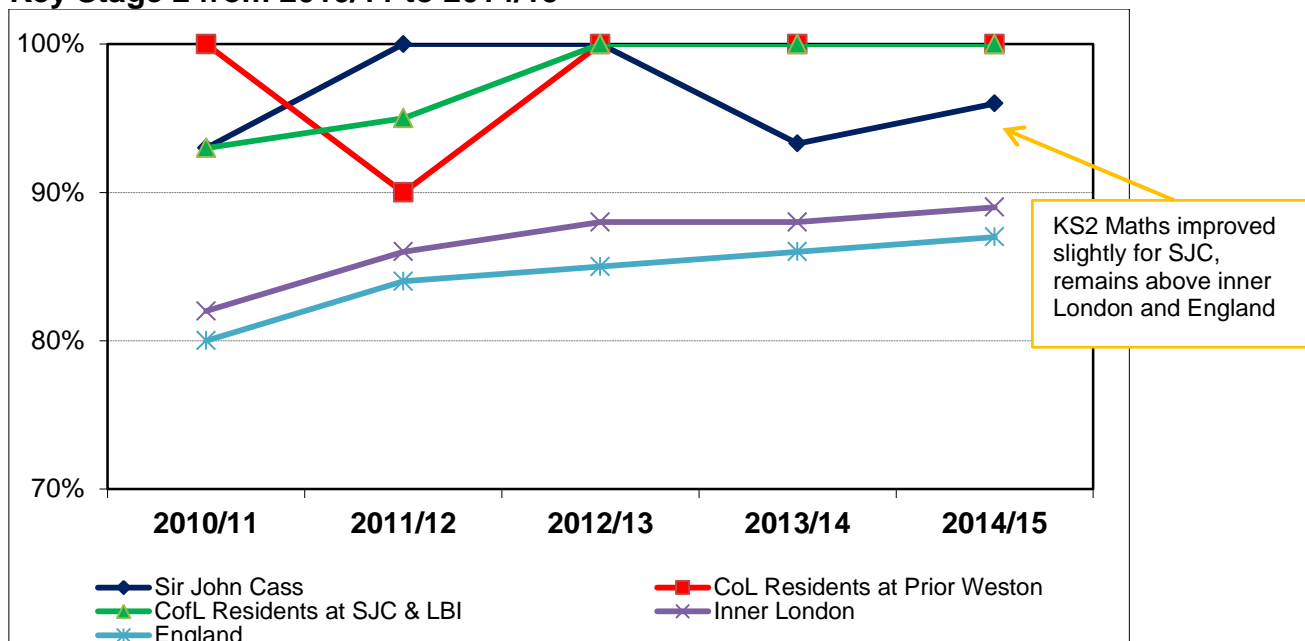


Chart 7 (above) shows Key Stage 2 performance in writing at Level 4 and above. Performance at Sir John Cass's School was at 96% and in 2014/15 this was slightly below all City of London resident children and City of London resident children attending Prior Weston School in Islington.

**Chart 8: Percentage of pupils attaining Level 4 and above in Mathematics at Key Stage 2 from 2010/11 to 2014/15**

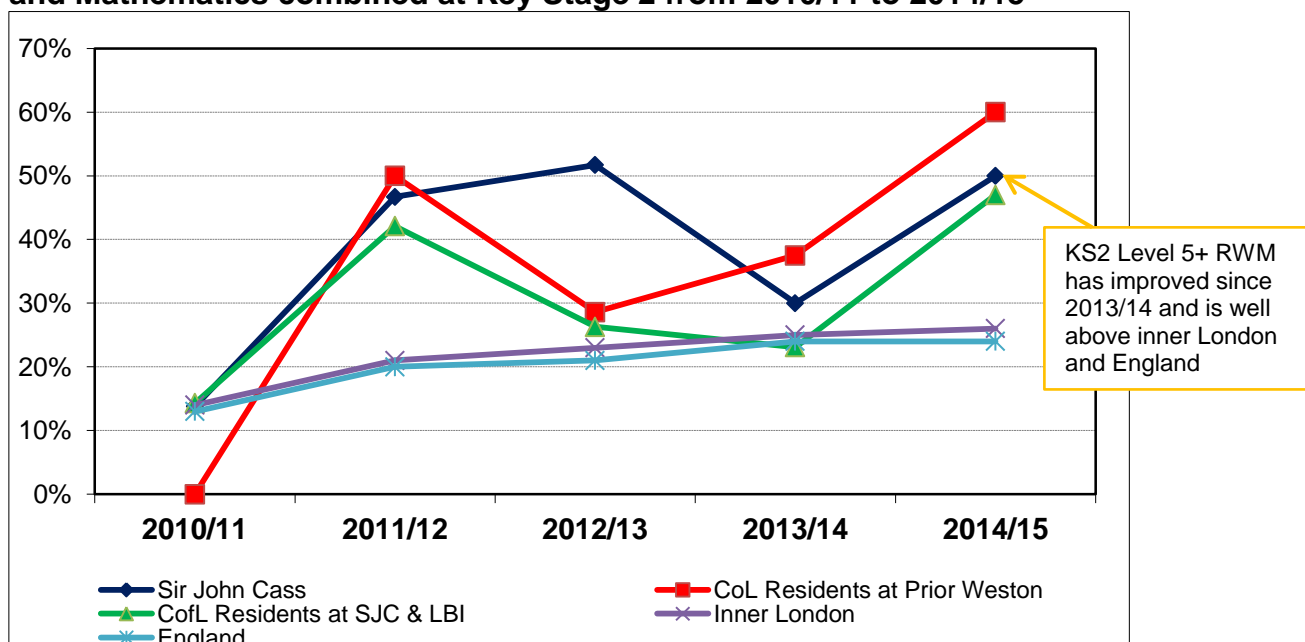


Source: DfE Statistical First Releases and City of London

### 5.5.1 Level 5 and above at Key Stage 2

Performance at Level 5 and above shows the proportion of children who achieved above the expected level for their age in reading, writing and mathematics combined. In 2013/14 we saw a drop in performance for this measure, largely as a result of reductions in reading and maths. Performance in the combined measure has improved by 20% points in 2014/15, well above inner London and England averages, yet this remains below City residents at Prior Weston.

**Chart 9: Percentage of pupils attaining Level 5 and above in Reading, Writing and Mathematics combined at Key Stage 2 from 2010/11 to 2014/15**



Source: DfE Statistical First Releases and City of London

Note: The change in the English measure in 2012/13, while still similar to the measure reported on in previous years, means that some caution should be applied when making direct comparisons

Chart 10 shows the Key Stage 2 performance in reading at Level 5 and above. Performance at Sir John Cass's School in 2014/15 has improved and at 79% is well above the inner London and national averages, and is slightly below City of London residents at Prior Weston 80%.

**Chart 10: Percentage of pupils attaining Level 5 and above in Reading at Key Stage 2 from 2010/11 to 2014/15**

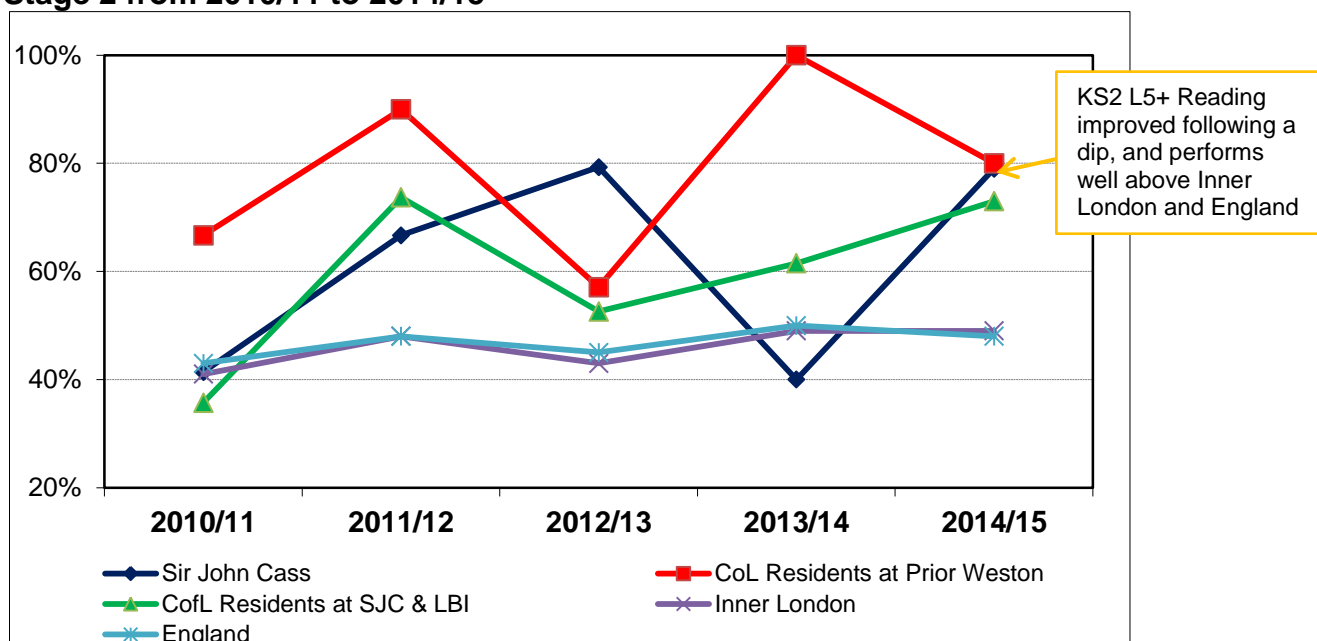
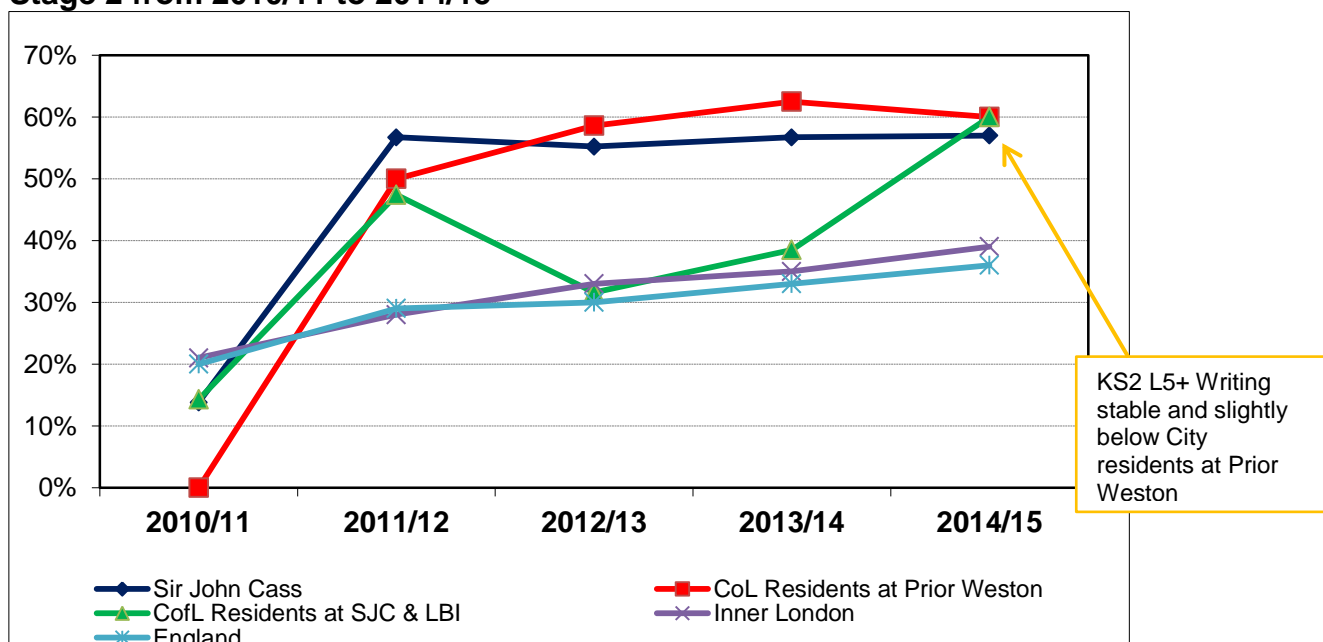


Chart 11 shows that pupils at Sir John Cass have maintained performance in writing, with 57% attaining Level 5 plus, well above Inner London and national comparators, and slightly below performance of City residents at Prior Weston.

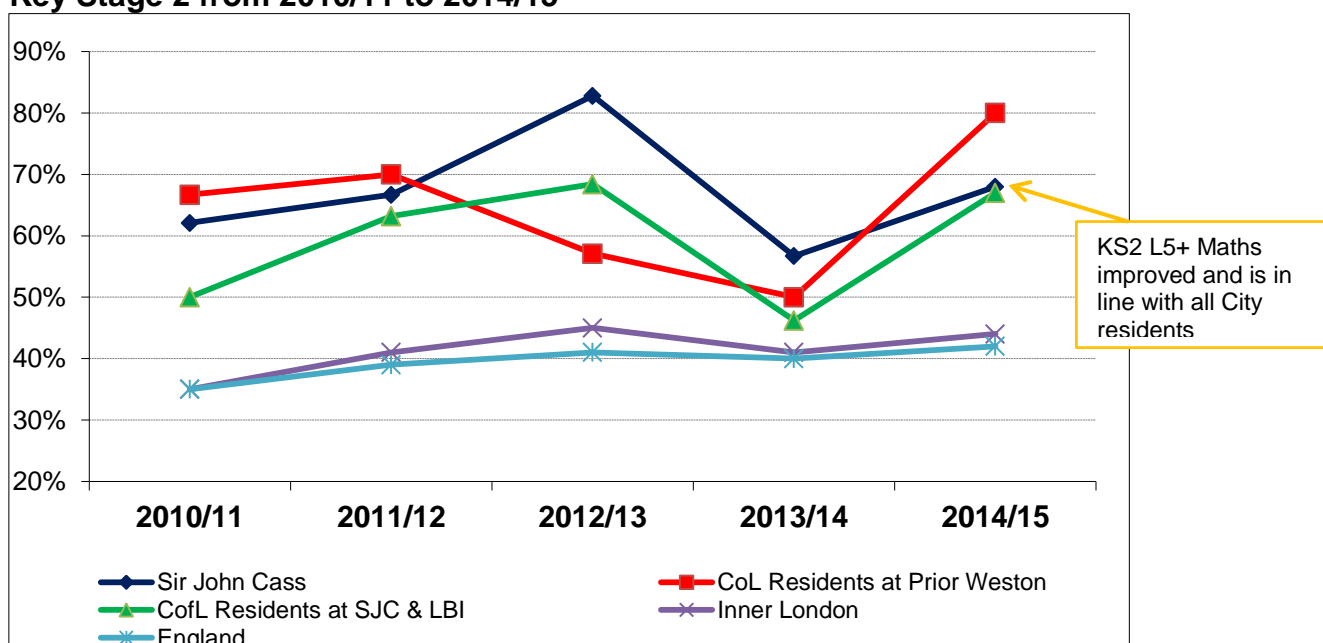
**Chart 11: Percentage of pupils attaining Level 5 and above in Writing at Key Stage 2 from 2010/11 to 2014/15**



Source: DfE Statistical First Releases and City of London

Chart 12 shows that performance in mathematics has improved at Sir John Cass, with 68% of pupils attaining Level 5 or above, well above the inner London and England averages, this is below performance of City residents at Prior Weston as a result of the substantial improvement made by City residents at Prior Weston in 2014/15.

**Chart 12: Percentage of pupils attaining Level 5 and above in Mathematics at Key Stage 2 from 2010/11 to 2014/15**



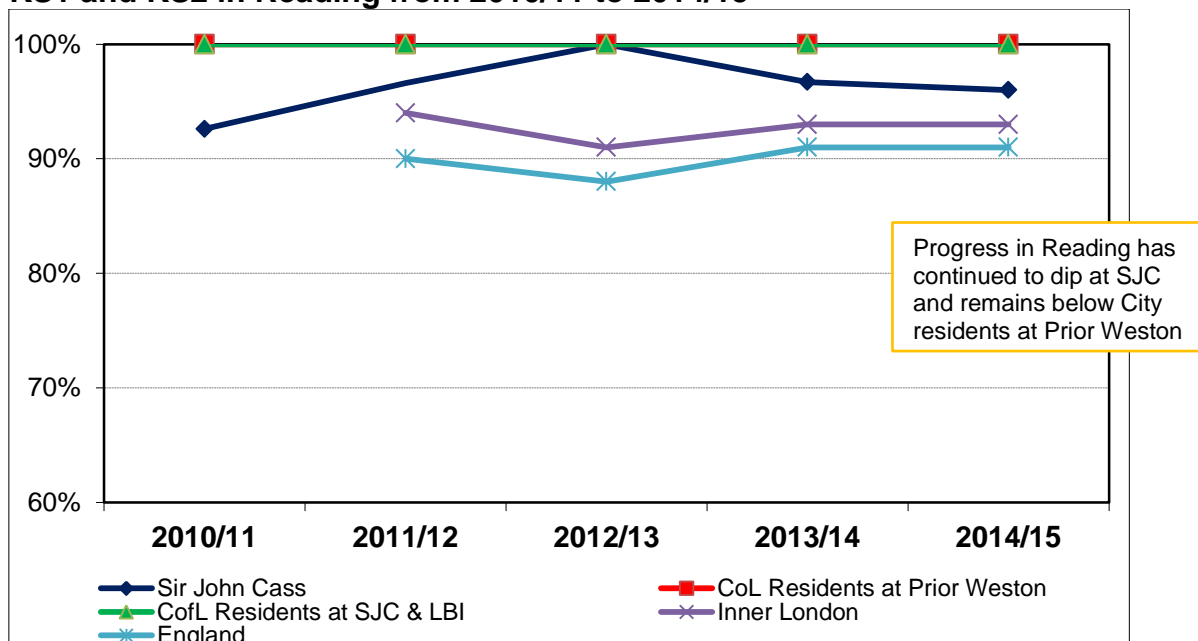
Source: DfE Statistical First Releases and City of London

### 5.5.2 Progress from Key Stage 1 to Key Stage 2

Sir John Cass's School has been very successful at achieving high rates of pupil progress between Key Stage 1 and Key Stage 2. Two levels progress is the minimum requirement that pupils are expected to achieve on these measures, i.e. between Key Stage 1 and Key Stage 2. Two levels of progress are based on the average 7 year old attaining Level 2 at Key Stage 1 and the average 11 year old attaining Level 4 at Key Stage 2. Progress is therefore based on measuring how far each child has progressed between the two assessments; so a child who had been assessed at Level 1 when 7 who then attained a Level 3 at 11 would be considered to have made the required progress, despite having attained below the expected Level for their age.

Chart 13 (following page) shows that 96% of pupils at Sir John Cass made two or more levels progress in reading in 2014/15, which remains above inner London and England averages yet has fallen below that of all City of London resident children and City of London resident children attending Prior Weston School in Islington.

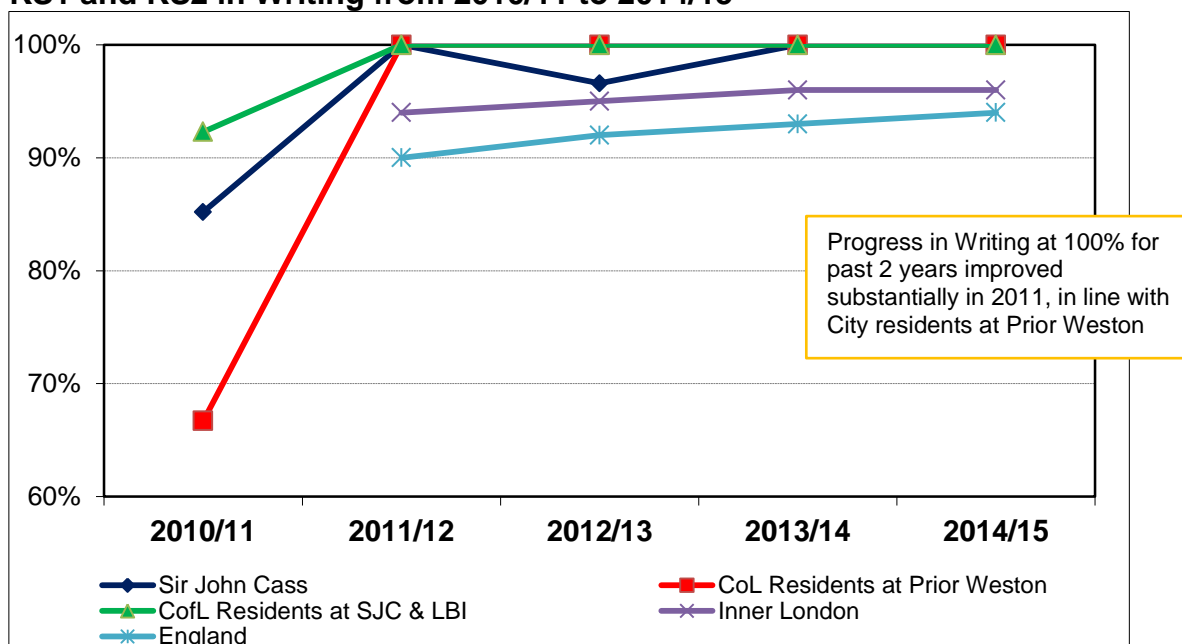
**Chart 13: Percentage of pupils making at least 2 levels of progress between KS1 and KS2 in Reading from 2010/11 to 2014/15**



Source: DfE Statistical First Releases and City of London

Note: Changes in the measures in 2012 mean that national statistics are not available for 2010/11.

**Chart 14: Percentage of pupils making at least 2 levels of progress between KS1 and KS2 in Writing from 2010/11 to 2014/15**

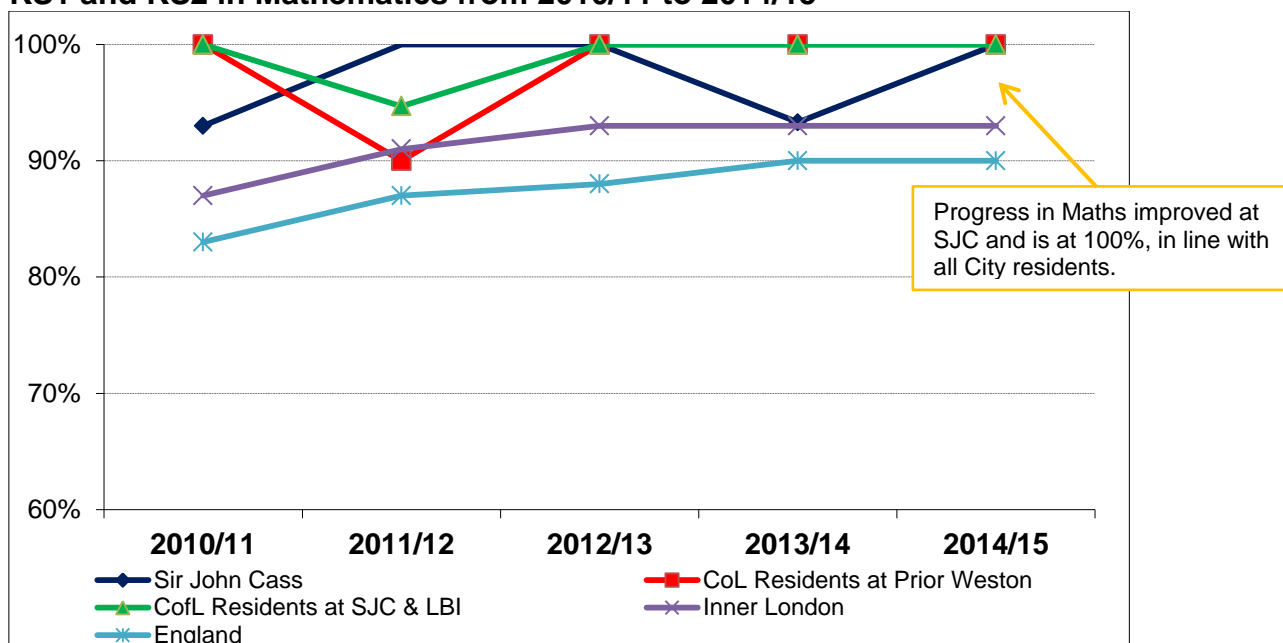


Source: DfE Statistical First Releases and City of London

Chart 14 shows that 100% of Sir John Cass pupils make expected progress in writing, which is above Inner London and national and in line with other City residents.

Chart 15 shows that 100% of pupils at Sir John Cass make expected progress in mathematics, again above Inner London and national and in line with all City resident pupils.

**Chart 15: Percentage of pupils making at least 2 levels of progress between KS1 and KS2 in Mathematics from 2010/11 to 2014/15**



Source: DfE Statistical First Releases and City of London



## 6. Attendance

Table 9 compares the City of London primary school overall absence rates with inner London and national. The City of London's overall absence rate improved in 2013/14 following a rise the previous year (up from 2.1% in 2011/12), overall absence remains better than the inner London and England averages.

**Table 9: Overall absence rates in 2012/13 and 2013/14**

%	Overall absence		Change from 2012/13 to 2013/14
	2012/13	2013/14	
City of London	3.5%	3.2%	-0.3% points better
Inner London	4.7%	4.0%	-0.7% points better
England (primary state-funded schools only)	4.8%	3.9%	-0.9% points better

Source: DfE Performance Tables and SFRs 2012, 2013

Note: Data on absence in 2014/15 is not yet available

Table 10 shows that there have been no pupils persistently absent from the City of London primary school for the two academic years 2012/13 to 2013/14, which is better than the inner London and England averages. Absence data for 2014/15 is not yet available.

**Table 10: Persistent absence rates in 2012/13 and 2013/14**

	Persistent absence (15%+ sessions)		Change from 2012/13 to 2013/14
	2012/13	2013/14	
City of London	0.0%	0.0%	0.0% No change
Inner London	3.7%	3.0%	-0.7% points better
England (primary state-funded schools only)	3.6%	2.8%	-0.8% points better

Source: DfE Performance Tables and SFRs 2012 and 2013

From 2016 onwards the Department for education will publish persistent absence at the more challenging lower 10% rate for all local authorities in England.

## 7. Admissions

Islington Council processes the school admissions for the City of London resident children. The data reported in this section relate to children who are City of London residents.

### 7.1 Primary school admissions

Table 11 shows the number and percentage of children who were offered a City of London school, an Islington school or an out borough school. In 2015 and 2013 around one third were offered a City of London school, and roughly 60% were offered an Islington school. In 2014, offers decreased slightly for other borough schools and increased slightly for Sir John Cass.

**Table 11: Offers of reception school places to City of London resident children in 2012 to 2014**

Reception Place Offers	2013		2014		2015	
	Number	%	Number	%	Number	%
Sir John Cass's	10	31.3%	13	40.6%	10	31.3%
Islington Schools	20	62.5%	18	56.3%	18	56.3%
Out borough Schools	2	6.3%	1	3.1%	4	12.5%
<b>Total</b>	<b>32</b>	<b>100%</b>	<b>32</b>	<b>100%</b>	<b>32</b>	<b>100%</b>

Source: Islington Admissions Section, based on the position on offer day.

Note: These are offers to City residents only. Only offered pupils are included in each year. The rest of the reception applications for Sir John Cass are also processed by LBI but they are non-City residents.

### 7.2 Secondary school admissions

Table 12 shows the number and percentage of children who were offered an Islington secondary school or an out borough school. In 2015 the secondary transfer cohort increased to 21 children, with 43% being offered Islington schools.

**Table 12: Offers of secondary school places to City of London resident children in 2013 to 2015**

Secondary Transfer Offers	2013		2014		2015	
	Number	%	Number	%	Number	%
<b>Islington Schools</b>	<b>6</b>	<b>28.6%</b>	<b>6</b>	<b>40.0%</b>	<b>9</b>	<b>42.9%</b>
Hackney	4	19.0%	2	13.3%	3	14.3%
Kensington & Chelsea	1	4.8%	0	0.0%	1	4.8%
Lewisham	0	0.0%	0	0.0%	0	0.0%
Southwark	1	4.8%	3	20.0%	1	4.8%
Tower Hamlets	6	28.6%	1	6.7%	6	28.6%
Westminster	2	9.5%	3	20.0%	0	0.0%
Essex	1	4.8%	0	0.0%	0	0.0%
Lambeth	0	0.0%	0	0.0%	1	4.8%
<b>Out borough schools Sub-Total</b>	<b>15</b>	<b>71.4%</b>	<b>9</b>	<b>60.0%</b>	<b>12</b>	<b>57.1%</b>
<b>Grand Total</b>	<b>21</b>	<b>100%</b>	<b>15</b>	<b>100%</b>	<b>21</b>	<b>100%</b>

Source: Islington Admissions Section, based on the position on offer day.

Note: These are offers to City residents only. Only offered pupils are included in each year.